

Easy_Measure

Handheld Video
Measuring Instrument



The Ultimate Solution for Digital Visual Inspection

Easy_Measure

Handheld Video Measuring Instrument

"Accurate measurements and digital HD sharp images in the palm of your hand."



Handheld and Compact

Easy_Measure allows live view measurements of your items in a simple and easy way. Just place the equipment over your sample and, using the software provided, you can **perform measurements like distances, points, lines, circles, angles, item count.**

Sharp and Accurate

Due to its high precision special telecentric optic system and integrated digital color camera, it allows to get **high resolution and high quality calibrated large digital images, without the distortions** of traditional microscopes.

Moreover, a special high intensity white led light source, divided in 4 independent 90° sectors, achieves a **diffused and unidirectional low angle light**, that enhances surface features, reduces reflections and ensures constant and excellent color response, a long life and a high reliability.

Industrial and Productive

Special optical solutions and light sources are available for specific needs. Due to good price / performances ratio, to the excellent image quality and to the ergonomicity, **Easy_Measure** is a perfect device for visual inspection and traceability of mechanical parts, plastic, glass, textures, prints, wood, hide, etc.

*ONE INSTRUMENT,
Many Operating Modalities*



1. Handheld use



2. Upside down use



3. Fixed stand use [optional]

Features

Easy_Measure - Handheld Video Measuring Instrument



- Light management flat keyboard (On/Off - intensity - 4 sectors selection)
- Single power + usb connection cable
- Industrial high resolution color digital camera
- Rubber rings for safe hand-grip
- Telecentric optics for accurate measures, Superb and sharp images
- Industrial grade materials / components
- Independent 4 sectors diffused white led light
- 4 viewing windows
- Diffusive ring for perfect surface illumination without reflections



- Extreme definition digital live view and accurate colors
- Acquire and store extreme definition digital images
- Extended range of measurements
- Compare master (any image saved in your pc) item with the live view image
- Save images with overlay measurements
- Export the measurement data report

Options

Easy_Measure - Handheld Video Measuring Instrument



Stand with backlight



Two arms white LED light



X, Y Positioning moving stage



Fixing Tools



Carrying Case



QHD monitor (2.560x1.440px)

Accessories



Calibration target



Software

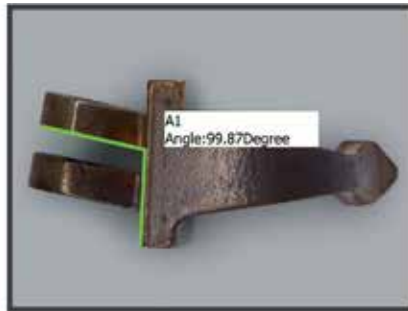
Applications

Easy_Measure - Handheld Video Measuring Instrument

- Production and laboratory quality check
- Repetitive incoming inspections
- Production processing inspections
- Hard to reach points check
- Dimensional gauging on live view & images
- Wide range of accurate measurements
- Automatic images storing
- Visual comparison with master picture



Dimensional check on an eyewear item



Dimensional check on an eyewear item



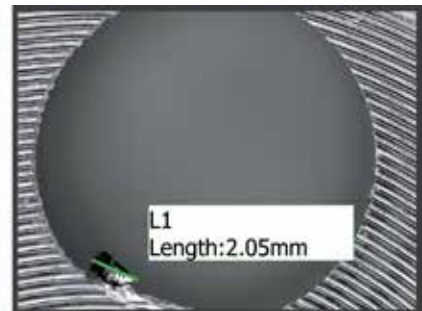
Scratch gauging on an appliance



Dimensional check on a surface



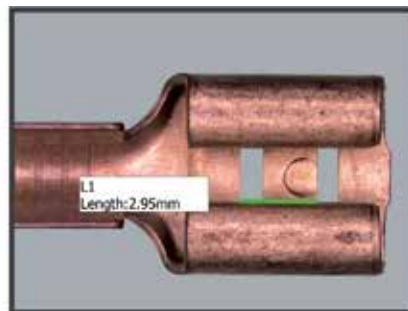
Dimensional check on a knot in wood surface



Dimensional check on a burr in steel item



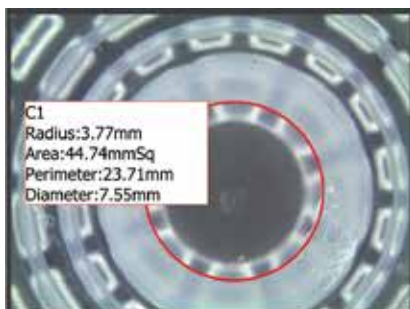
Scratch gauging on glass



Dimensional check on electrical item



Dimensional check on a printed surface



Dimensional check on a plastic item



Dimensional check on a printed glass surface



Live view comparison with master picture

Specifications

Easy_Measure - Handheld Video Measuring Instrument

Camera	3 Mega Pixel Color USB 2.0 - direct connection to the PC/Tablet	
Light receiving lens	Telecentric lens	
Field of View (FoV) (mm)	6.5x4.9	25.5x19.2
FoV Diagonal (mm)	8.1	31.9
FoV Area (mm ²)	32	490
Magnification*	100X	25X
Resolution (µm)	3.25	12.5
Illumination system	Diffused white led light, divided in 4 sectors (90° each) with independent selection	
	Back light [optional with stand]	
	Led spot light [optional with arms lights]	
Dimensions (mm)	70x250	70x250
Weight (kg)	1.5	1.5
Operation ambient °C	+10 to +40°C	
Power supply	110-220 Vac 50-60 Hz included	
PC Device	Not provided [on request]	
Measurement points	Manual - Point and Click	
Measure buttons	Show Scale Line, Calibrate, Calibrate Table, Decimal, Measurement List, Layer, Delete All, UnLock/Lock, Select, Line, Parallel, Perpendicular, Rectangle, 2-points Circle, 3-points Circle, Diameter Circle, Concentric Circle, Polyline, Polygon, Arc, Angle, Point, Annotate, Delete, Cross-Ruler	
Color Control	Gamma, Contrast, Saturation, Color Enhancement, Monochrome, White Balance, Area WB, Black Balance, FlatFielding, Red, Green, Blue	
Image Control	Exposure Control, Color Control, Fluorescence, Levels, Capture Mode, Parameters	
Image Processing	Brightness, Gamma, Contrast, Saturation, Sharpen, Levels, Extend DoF, Stitching, HDR image	
Available Image Types	JPEG, BMP, TIFF, RAW	
Data Report	*.xls, *.txt	
Print Report	Windows installed Printer (optional *.pdf), *.xps	
Language interface	English, Italian	
System Requirements	OS: Windows 10 (32 & 64 bit) - CPU: Intel Processor (Core 2 Duo or higher) Memory: 2 GB or More recommended - USB ports: USB2.0 Hi-Speed port	

* Using a typical 27" QHD monitor (2560x1440 px)

©2017, SmartVision. Technical specifications are approximated and are subject to change without notice. Printing errors excepted.



SMARTVISION
IN LINE QUALITY

info@smartvision.it
www.smartvision.it